



**RIVERSIDE
PRIMARY**
Lionheart Educational Trust



MRS ROBERTS
HEAD OF SCHOOL/
LEAD DSL



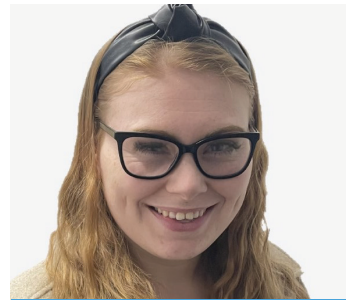
MRS PATEL
Y3/4/5 TEAM LEADER/
DEPUTY DSL



MR GREEN
Y2 TEAM LEADER/
DEPUTY DSL



MRS DAKIN
EYFS/Y1 TEAM LEADER/
DEPUTY DSL



MISS GOODE
PP LEAD/
DEPUTY DSL



MISS GILLIES
SENDCo/
DEPUTY DSL



MRS GEORGE
SENCO/
DEPUTY DSL



MRS GUTTERIDGE
OUTREACH OFFICER/
DEPUTY DSL



MRS WHITE
OFFICE MANAGER/
DEPUTY DSL

DESIGNATED SAFEGUARDING LEADS

PLEASE SPEAK TO A DSL IF YOU HAVE ANY CONCERNS ABOUT THE
WELL-BEING OR SAFETY OF A PUPIL DURING SCHOOL TIME

IF YOU HAVE ANY CONCERNS REGARDING A PUPIL OUT OF SCHOOL HOURS
PLEASE CONTACT LEICESTERSHIRE FIRST RESPONSE ON 0116 305 0005